



Faces of the Village
Tim Berry, Chairman of Boxted Cricket Club

Tim, on behalf of the club, is keen to welcome new players of any age and calibre to the club.

<http://www.boxtedcricketclub.co.uk>

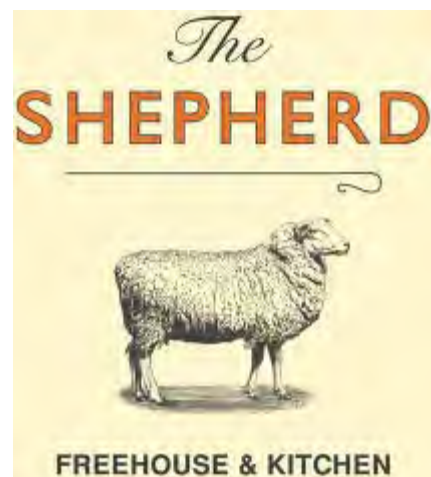


Last of this year's Lenten Frugal Lunches

Boxted Village Hall Tuesday 24 March.

12 mid day following Coffee Cafe

In aid of the Colchester Emergency Night Shelter



Colchester Ramblers Walk

6 + 4.5 miles

through Boxted and Langham with refreshments at The Shepherd in Langham.



Boxer dog Poppy enjoying a walk on part of The Essex way recently.

http://en.wikipedia.org/wiki/Essex_Way

Wednesday 25 March.

Meet at The Shepherd pub, Langham. Coffee available from 9.30 am. Figure of eight walk in delightful countryside using part of the Essex Way in the afternoon, passing the medieval St Mary's Church which overlooks Dedham Vale. Order food before walk starts.

<http://www.shepherdlangham.co.uk>



Langham Community Centre

Langham Bridge Club

are hosting the Community Café on Friday 27 March from 10.30–12.00, with the 100 club draw taking place at 11.30



Anyone who wishes to have a lily in memory of a loved one included in the Easter Flower arrangements in either of the village churches please contact:

Annette Whybrow - Boxted Church Tele 01206 272773

Dot Garner - Langham Church Tele 01206 272599

or alternatively please put your contact particulars and the number of lilies you would like to buy on the list near each of the church doors.

The lilies are £2.35 each and the list will be closed on 29 March.

Church Services Sunday
29 March - Palm Sunday

11 am service at Boxted Methodist
Church

11:15 am Holy Communion, St Marys,
Langham



Bus and Passenger Transport Strategy

ECC wants to find out your views on the Bus and Passenger Transport Strategy, which covers how ECC plans to grow and improve the bus network. You do not have to be a regular bus user to take part – ECC needs and welcomes views of both users and non-users. The survey runs from 27 January to 31 March 2015.

Take part in the survey here

There is a facility to complete the survey over the phone. 'Healthwatch' on 01376 572829 are available to assist between 10 am and 2pm Monday – Friday.



Mobile Library:

Boxted Playing Field, 10.55 to 11.30

Tuesdays 31 March and 14 April

BOXTED METHODIST CHURCH



Led by
Rev Ruth Ridge

**GOOD
FRIDAY
SERVICE**

Friday 3rd April at 3:00pm
music by the Boxted Methodist Silver Band

5th APRIL

**11am
SUNDAY SERVICE**

**3pm
EASTER BAND SERVICE**
with the Boxted Methodist Silver Band

... Join us to celebrate Easter ...

BOXTED METHODIST CHURCH

**EASTER
SUNDAY**

Langham Film Nights
Presents....

"BENEDICT CUMBERBATCH IS OUTSTANDING"

"THE BEST BRITISH FILM OF THE YEAR"
★★★★★

"AN INSTANT CLASSIC"
★★★★★

"A SUPERB THRILLER"
★★★★★

★★★★ ★★★★★

**THE IMITATION
GAME 12A**
BASED ON THE INCREDIBLE TRUE STORY





SATURDAY 4TH APRIL 2015
LANGHAM COMMUNITY CENTRE

Cash bar opens at 7pm film starts at 7:45pm

TICKETS £4 EACH AVAILABLE AT
THE LANGHAM COMMUNITY SHOP OR ONLINE AT:
<http://www.langhamcommunitycentre.org.uk/LFN.html>

In partnership with The Shepherd we are excited to offer
"Meal & a Movie"

Enjoy a delicious 2 courses of your choice from the set menu
from 5:30pm then come along to see the film.
£20 a ticket including the cost of the cinema ticket
Available only at The Shepherd or to book call:
01206 272 711

TFN Presents: 



FROM THE PRODUCER OF HARRY POTTER

PADDINGTON

Sunday 5th April Langham Community Centre
Doors open 5.45 for 6pm
Venue fee on the door of £2
Drinks and sweets for sale

TFN are the Teen Film Nights
They are alternative film nights
chosen by and run by teens.
They are open to all,
within the BBFC's age restriction.



Langham Teen Film Nights 



CHRISTOPHER GARNETT

With great regret we report the death of Christopher Garnett, who was for many years a Borough Councillor representing Boxted & Langham and later Dedham & Langham. Chris was President of Boxted British Legion and a great supporter of the club. He was also a long-serving Langham Parish Councillor until his retirement last year and latterly managed the advertising side of the Newsletter.



Thank you to Rix Farms who carried out a litter pick last week along Boxted Road and Queens Head Road from the A134 to Straight Road.

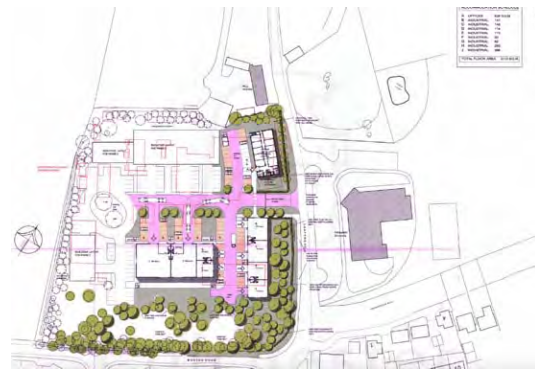
They collected 42 bags of rubbish, 1 bike frame, 1 electric drill, 1 vacuum cleaner, 2 exhaust systems and 28 hub caps.

Hill Farm Site, Boxted Cross



The planning application for residential development:

<http://bit.ly/1CKI2Gr>



The approved planning app for industrial buildings at Hill Farm

<http://bit.ly/1LPhSbo>

Draft Minutes of the recent NDP meeting re Hill Farm

Neighbourhood Watch

Fordham and Stour	13/03/2015 21:30	14/03/2015 10:00 Straight Road	Other Theft	SUSPECTS UNKNOWN HAVE ENTERED THE VICTIMS BACK GARDEN AND HAVE STOLEN 200 FENCE POSTS. THESE WERE NOT FITTED AND WERE RESTING AGAINST THE SIDE OF THE HOUSE.
Dedham and Langham	11/03/2015 15:05	11/03/2015 15:15 South View	Criminal Damage to a vehicle	SUSPECT UNKNOWN HAS CAUSED DAMAGE TO THE VICTIMS VEHICLE BY SLASHING THE FRONT OFFSIDE TYRE BY USING AN UNKNOWN INSTRUMENT.
Dedham and Langham	12/03/2015 18:00	13/03/2015 09:00 Mill Lane	Burglary in a building other than a dwelling	SUSPECT UNKNOWN HAS GAINED ENTRY TO THE PREMISES BY CAUSING DAMAGE TO THE WOODEN FRONT DOUBLE DOORS BELIEVED TO BE BY USING AN IMPLEMENT TO BREAK THE BOLT AND PADLOCK AND THEN USING IT TO JEMMY THE DOOR OPEN. NO SEARCH CONDUCTED, NO PROPERTY REMOVED.

Mobile Police Office

The Mobile Police Office is being withdrawn. The last visit at Boxted Playing Field car park is Friday March 27 from 12.15 to 1.15 pm

Garage and shed security

Whilst most houses have adequate security what is often neglected is the shed or garage, "nothing much in there" I hear you say, "Just a garden spade and fork", but these are perfect tools for burglar to use to get in your house. Adds insult to injury when the tool used to break into your house is your own, so give it some attention.

Garages and sheds by the nature of their construction and position especially when away from the house are always going to be vulnerable. Quite often the supplied locks provide just the barest minimum security and are easily overcome so always consider supplementing the existing locks with further locking systems both for the doors and items within.

On garage doors this could be by adding locking bolts to both sides of the "up and over door" or a garage door defender in the ground in front of the door, if you have

side door don't forget this too. With sheds coach-bolt and plate the padlock hasp sections to the frame and door, use a good quality "Close Shackle" padlock; don't forget the hinges ensure they cannot be unscrewed.

Consider using "Ground Anchors" or "Shed Shackles" to chain larger items to (again good quality padlock and chain); keep chains tight so that it is not in contact with a surface it can be struck against. Protect windows with a wire mesh and fit a curtain or white wash the windows to prevent prying eyes.

Visibly security mark your property with your post code and house number this reduces the value to the thief; you can even register serial numbers free of charge at www.immobilise.com . There are also a number of commercially available security marking systems available that are suitable for a wide range of products and others for specific products.

It is also worth fitting a shed alarm to the shed or garage, and adding security lighting these are relatively inexpensive and available from most DIY/hardware stores.

If siting a new shed where possible position it within sight of rooms in the house routinely occupied.

Products that are fit for purpose can found by looking for the "Secured by Design" or "Sold Secure" logos, or on their websites <http://www.securedbydesign.com/> or <http://www.soldsecure.com/> .

Keep informed about crime and policing issues which affect you by signing up to Essex Community Messaging – www.essex.police.uk/ecm .



A Poland Cockerel was found wandering lost in Cage Lane, Boxted Cross at the end of February and has been taken in and given a temporary home with some other chickens. Being a very handsome fancy breed cockerel, he must be being missed by someone? Please make contact via this email if you know of his owner.



The Colchester Park and Ride site taking shape